

Phone: 286 - 0922  
Fax: 287 - 4066  
Telex: 72099  
Telegraphic Address:  
AFTN: VTBAOYX  
COMM. CIVIL AIR BANGKOK

DEPARTMENT OF AVIATION  
Aeronautical Information Service  
Tung Mahamek, Bangkok 10120  
Thailand

AIP SUPPLEMENT

A8/99  
8 November

---

REVISION OF IAC VOR/DME RWY03R AT BANGKOK INTERNATIONAL AIRPORT

According to AIP Supplement A6/99 dated 23 September 1999 regarding Approach Chart VOR/DME RWY03R which has been cancelled due to technical reasons, now it has been revised already.  
(see attached chart)

This Chart will effect from 15 November 1999 and remain in force until it is incorporated in AIP - Thailand.

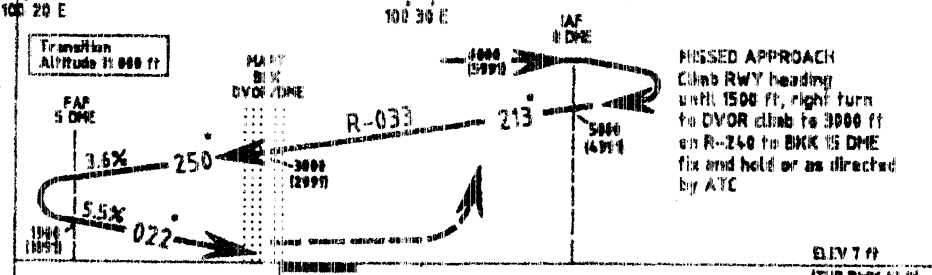
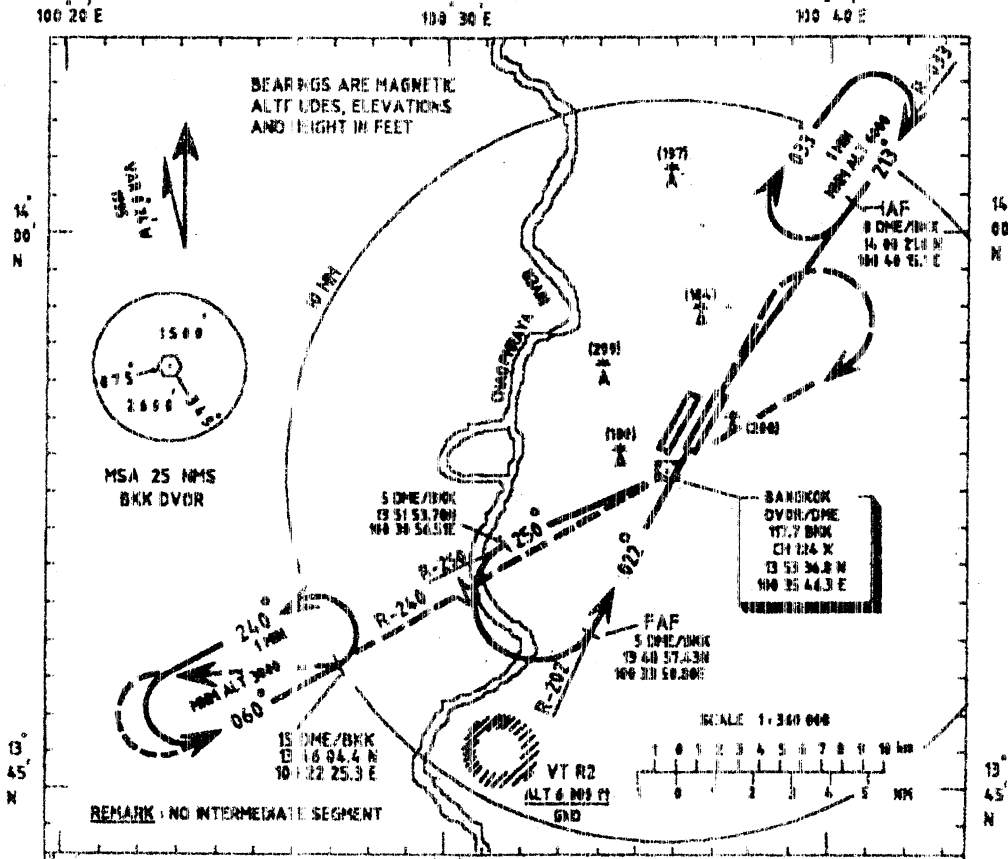
---

INSTRUMENT  
APPROACH  
CHART-ICAO

AERODROME ELEV 9 FT  
HEIGHT RELATED TO  
AERODROME - ELEV

TWR 118.1 236.6  
APP 119.1 204.0  
121.7 125.5 255.6

BANGKOK / INTL  
VOR / DME  
RWY 08 R



OCA/H	NM FROM THR RWY 08R				Rate of Descent ft/min
	A	B	C	D	
Straight Approach	590/545				FAF-MAPT 4.5 NM 240 215 256 541 1530
Circling	70/775	100/870			595 570 700 700 1010