



ข้อมูลทั่วไปและแนวโน้มอุตสาหกรรม

กลุ่มผู้ประกอบการสายการบินและขนส่งสินค้าทางอากาศ

THAILAND AIR TRANSPORT IN 2017



556 ROUTES

416 International Routes

140 Domestic Routes



42 AOL

39 Commercial Airlines

25 Scheduled Airlines

14 Charter Airlines

1 Air Cargo

2 Aerial Work



709 AIRCRAFTS

410 Commercial Aircrafts

299 Private Aircrafts

**155 Million Passengers
in 2017**



**423,000 Passengers
Per Day**



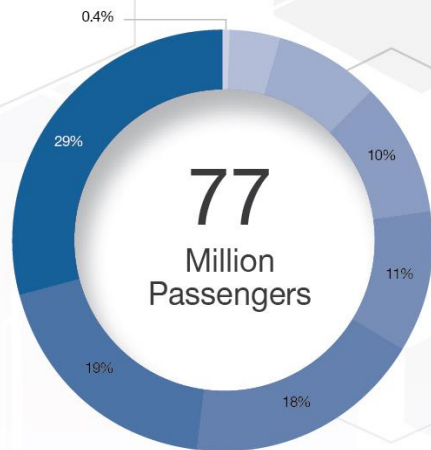
**2,854 Flights
Per Day**



Market Share of Airlines by passenger in 2017

Domestic Passengers

Market Share

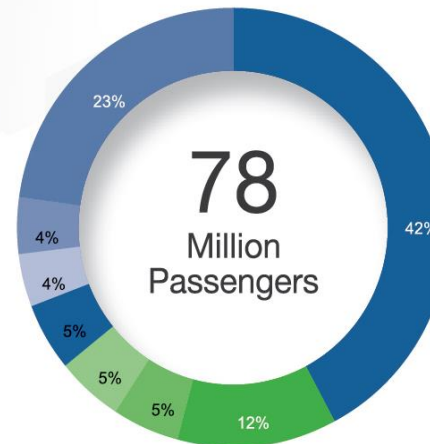


Airlines

- ✈ Thai AirAsia, 29%
- ✈ Nok Air, 19%
- ✈ Thai Lion Air, 18%
- ✈ Bangkok Airways, 11%
- ✈ Thai Smile, 10%
- ✈ Thai Airways, 8%
- ✈ Thai Vietjet Air, 4%
- ✈ Others, 0.4%

International Passengers

Market Share

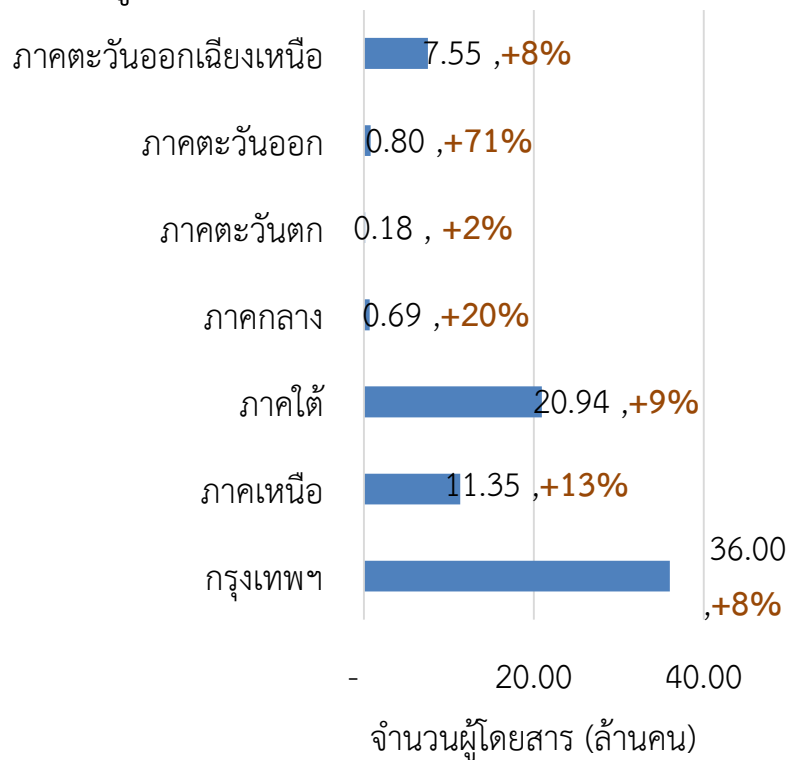


Carrier Nationality

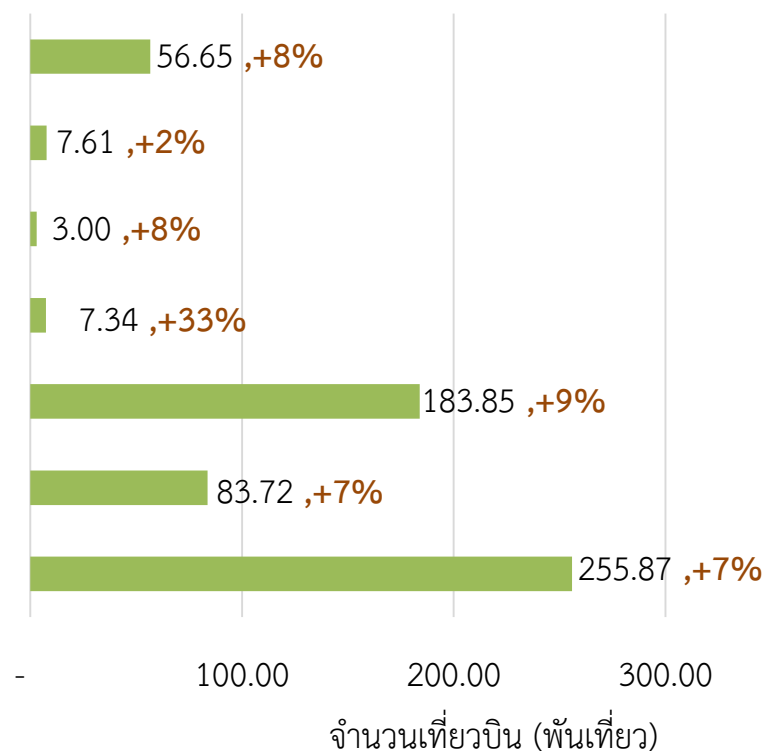
- ✈ Thailand, 42%
- ✈ China, 12%
- ✈ Singapore, 5%
- ✈ UAE, 5%
- ✈ Hong Kong, 5%
- ✈ Korea, 4%
- ✈ Malaysia, 4%
- ✈ Others, 23%

จุดหมายปลายทางผู้โดยสารภายในประเทศ

ผู้โดยสาร 77.50 ล้านคน ▲ +9%



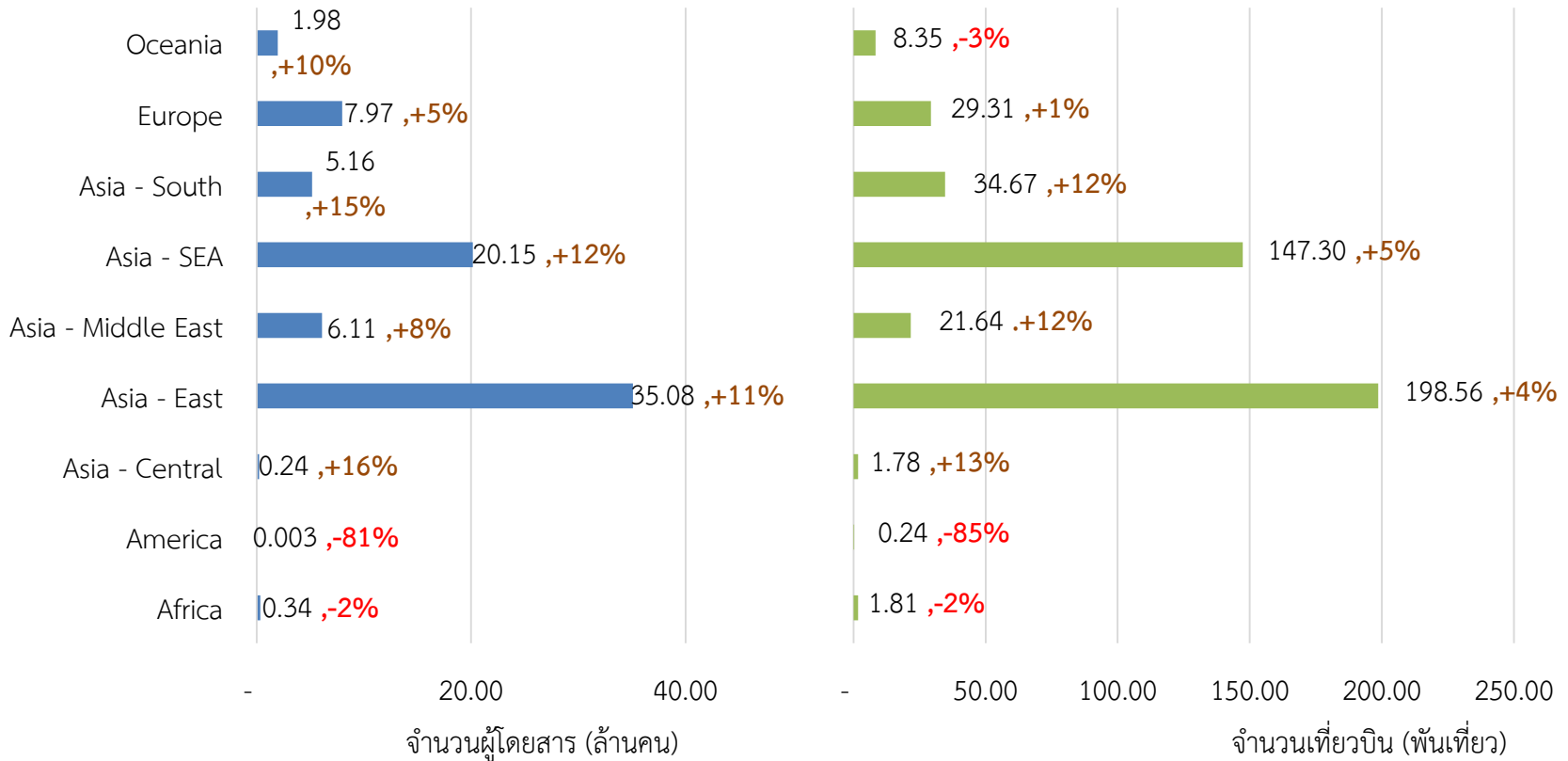
เที่ยวบิน 598,035 เที่ยวบิน ▲ +8%



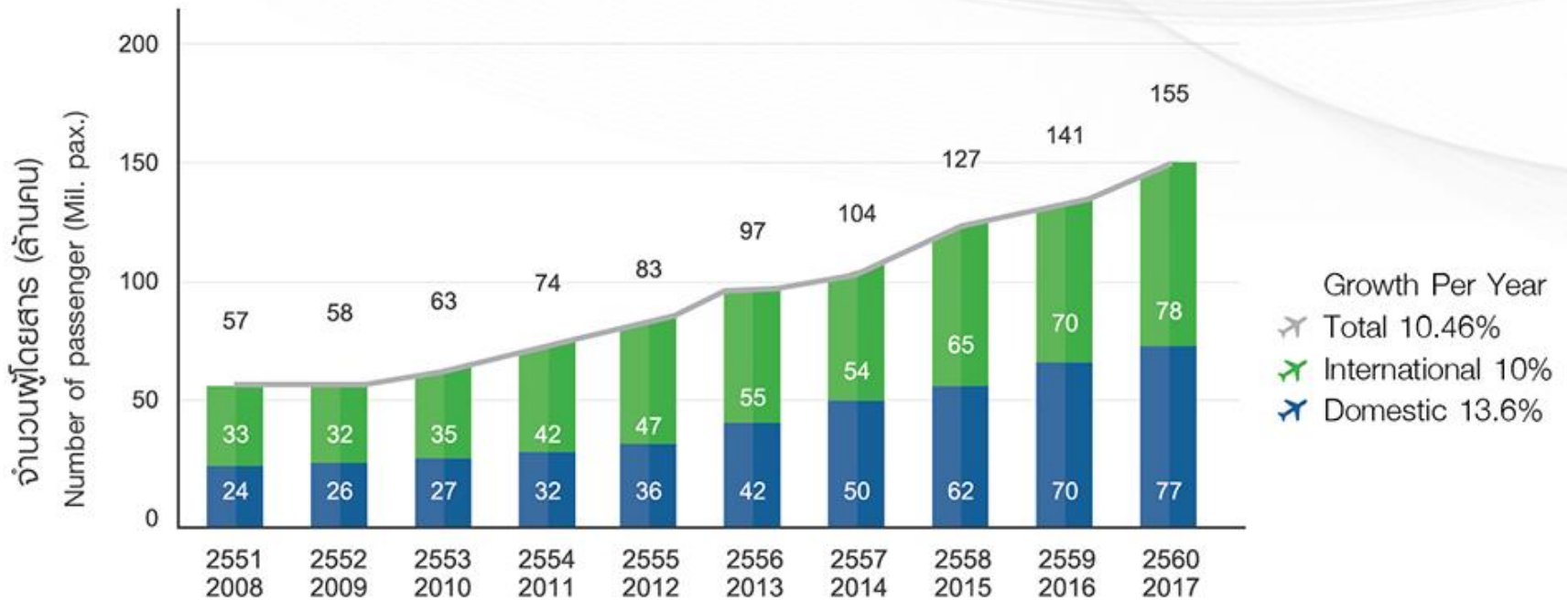
จุดหมายปลายทางผู้โดยสารระหว่างประเทศ

ผู้โดยสาร 77.02 ล้านคน ▲ +10%

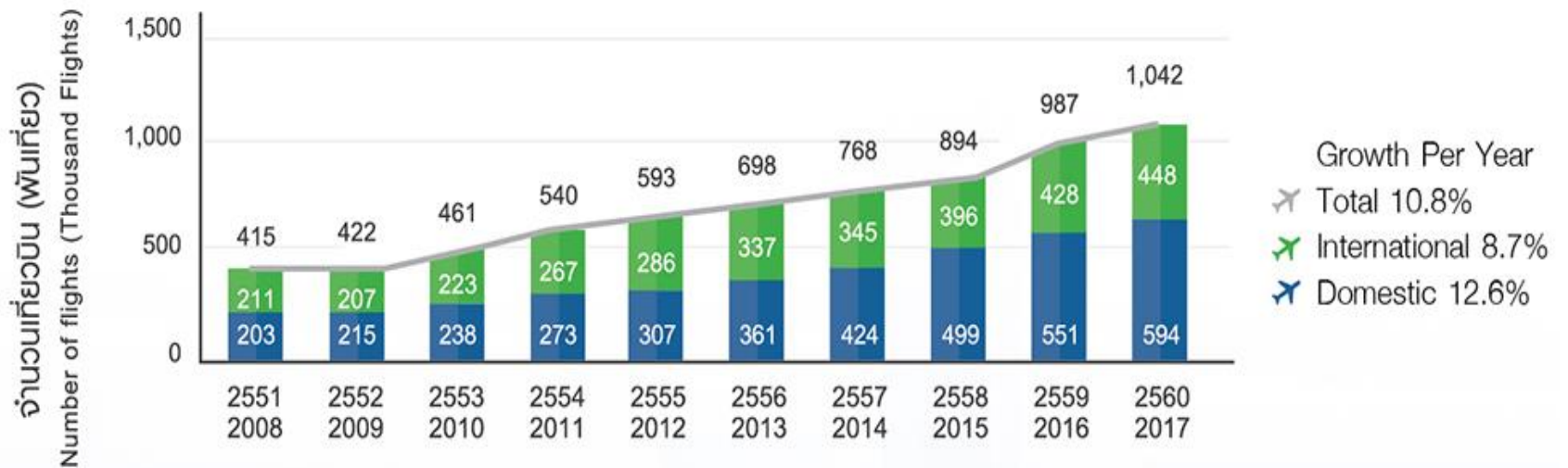
เที่ยวบิน 443,655 เที่ยวบิน ▲ +5%



Total Number of Air Passenger from 2008 – 2017



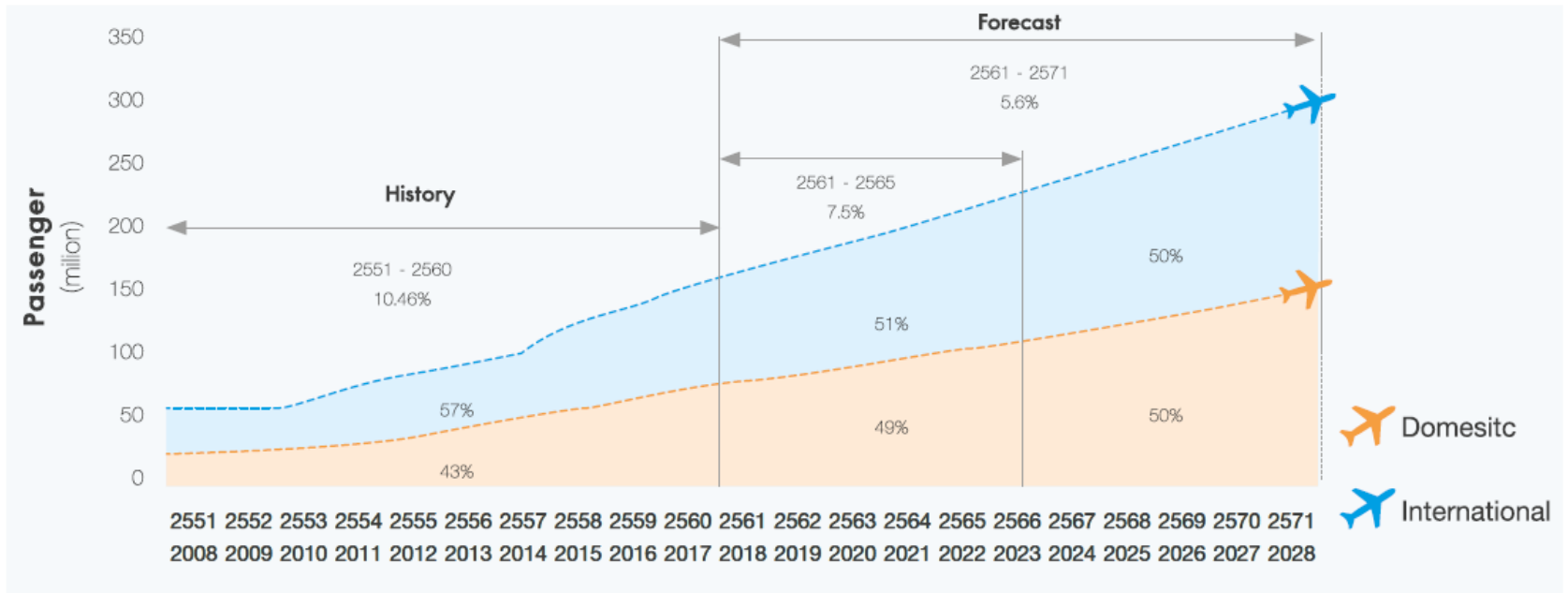
Total Number of Flight Movement from 2008 – 2017



Total Number of **Air Cargo** from 2008 – 2017



The Growth of Thailand Air Passenger



Thailand air transport passengers during 2008 – 2017 grew at 10.46% per year. It is projected to increase at 7.5% per year from 2018 to 2022 (5 years), and it will increase at 5.6 % per year from 2018 to 2028 (10 years).

The Growth of Aircraft Movement

The forecasting of
no. of Commercial Flight in
**National
Commercial Airport
Master Plan**

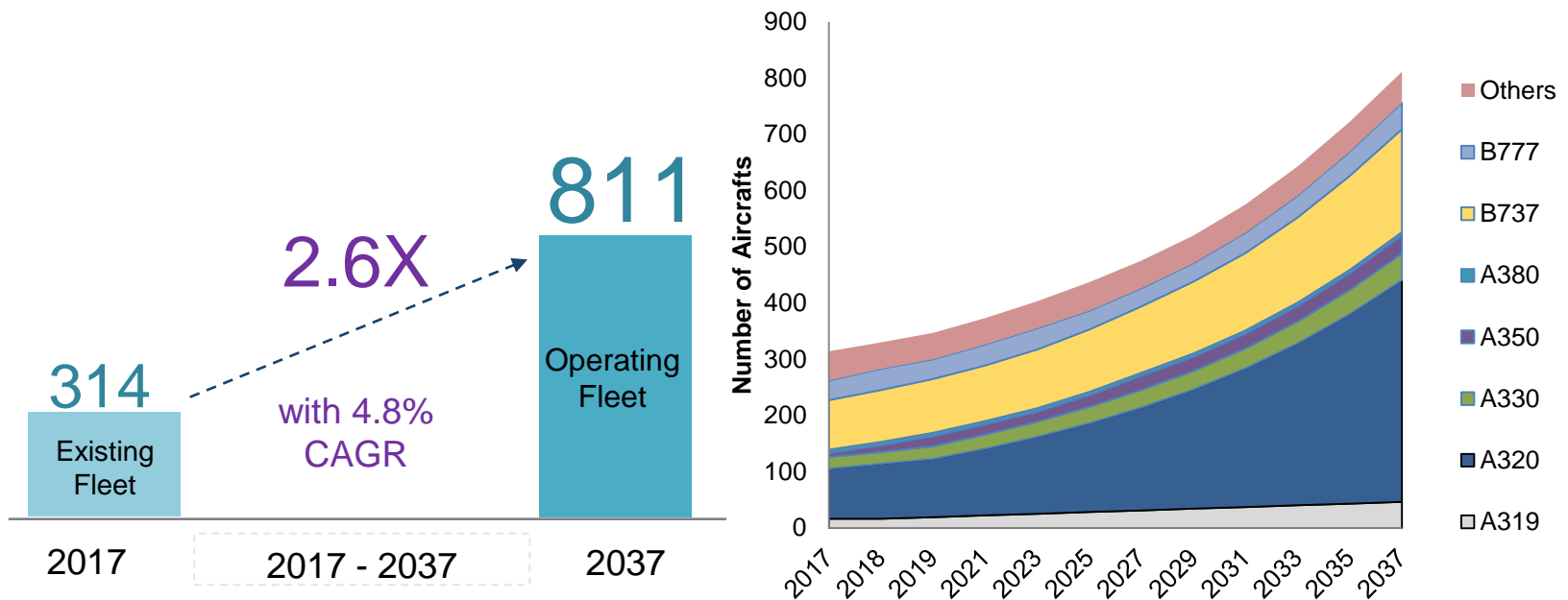
8%
per year

**(5 years)
2016 – 2020**

6.45%
per year

**(10 years)
2016 – 2025**

Thailand Fleet Forecast 2017- 2037



The growth in Thailand fleet is majorly seen due to increase in narrow body aircrafts (A320 & B737 series) by volume.

